

# CONNECTION SET

# NEWS



## T-3360.PP-R

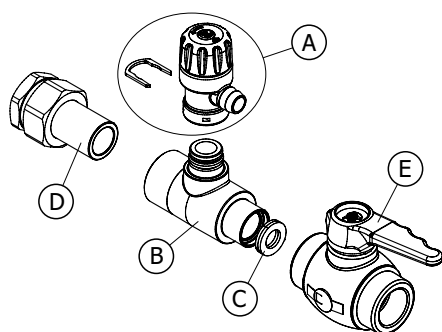


### TECHNICAL DATA:

Maximum working pressure: 0,6 MPa  
Safety overpressure:  $0,67 \pm 0,03$  MPa  
Maximum working temperature: 90 °C

### THE SET CONTAINS:

- Safety valve head (A)
- PP-R body with check valve (B)
- PP-R inner ring (C)
- PP-R connection with internal thread (D)
- PP-R ball valve (E)



### ADVANTAGES

- economical design
- easy assembly and replacement of the head without the need to replace the body
- removable safety part (available as a spare part in DZ Dražice)
- clear identification and traceability of valves
- 360° adjustment of the drain - possible motion in any direction
- 100% final quality control of discharge pressure
- including the check valve

